



FORO 4

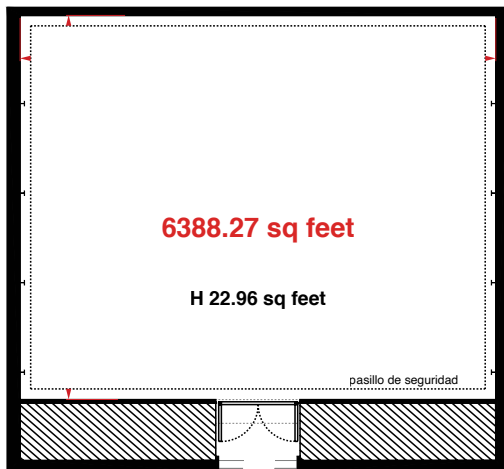
Carlos Fuentes

3622 sq feet of versatility

3622.48 SQ FEET

HEIGHT FROM FLOOR TO LIGHTING GRID: 22.96 SQ FEET

8112.97 sq feet



TECHNICAL SPECS	ADDITIONAL IN STAGE 4
<p>Elephant Doors and Pedestrian Doors</p> <p>Electrified grid (Supports up to 150 kg per m²)</p> <p>40 trombones</p> <p>Lighting bridge</p> <p>Double wall and insulating roof</p> <p>Acoustic treatment on floor and walls</p> <p>Load center</p> <p>Polished and level floor</p> <p>Multipurpose spaces and bathrooms</p> <p>Basecamp</p>	<p>Dressing rooms</p> <p>Makeup room with two and three coquettes</p> <p>Catering zone</p> <p>Production offices</p> <p>Silent air conditioning</p> <p>1200 A electrical substation</p> <p>Symmetric dedicated Internet from 100 mb</p> <p>*extra cost</p>